


Greenfield Enclave
Kelambakkam

GREEN FIELD ENCLAVE

ANAND & VENKATESH
GIVING LIFE TO CONCRETE IDEAS

ANAND & VENKATESH
GIVING LIFE TO CONCRETE IDEAS



OPEN GYM

PLAY AREA

OSR GARDEN

PLOT AREA

INCREMENTAL HOUSING

CONNECTING ROADS

ENTRANCE GATEWAYS

MAIN ROAD

Green Field Enclave is a community of 'Custom-made Housing Plots' tuned to needs of sophisticated urban lifestyles. This landscaped project has lush greeneries, Open parks with recreational amenities and well laid black top roads. At Green Field Enclave, you get to choose any one option for respective types of villas. The customers are free to expand the villa as per their requirements. This gated community is designed with serene ambience to ensure healthy, stress free lifestyle.

MASTER PLAN

PLAN SHOWING THE APPROVED LAYOUT PLAN OF HOUSE SITES COMPRISED IN OLD S.NO : 260/1B, NEW S.NOs : 260/1B1, 260/1B2, 260/1B3 & 260/1A3, SATHANKUPPAM VILLAGE - VANDALUR TALUK AND CHENGALPET DISTRICT.

VANDALUR - KELAMBAKKAM ROAD

- Less than 600 sq.ft
- 600 - 900 sq.ft
- 900 - 1200 sq.ft
- Above 1200 sq.ft
- Phase two plots
- Green field enclave Extension
- Public purpose



TN/01/LAYOUT/0875/2022
DATED : 01.03.2022



DTCP APPROVED
L.P/MLPA(C.D) NO : 56/2021

GREEN FIELD ENCLAVE @ SATHANKUPPAM (KELAMBAKKAM PANCHAYAT)

MASTER-PLAN AREA STATEMENT

PLOT NO.	FACING	SURVEY NO.	NORTH	SOUTH	WEST	EAST	PLOT AREA
1 (CORNER)	SOUTH/WEST	260/181	28'9"	27'6"	16'6"	22'	529
2	SOUTH	260/181	26'6"	26'3"	22'	27'6"	653
3	SOUTH	260/181	24'6"	25'3"	27'6"	32'6"	746
4	NORTH	260/181	25'	26'3"	30'	30'	769
5	NORTH	260/181	26'3"	26'3"	30'	30'	788
6 (CORNER)	NORTH/WEST	260/181	28'6"	28'6"	30'	30'	843
7 (CORNER)	NORTH/EAST	260/181	25'3"	25'	50'6"	54'9"	1310
8	NORTH	260/181	25'3"	25'	46'	50'6"	1212
9	NORTH	260/181	25'3"	25'	41'3"	46'	1096
10	NORTH	260/181	25'3"	25'	36'9"	41'9"	986
11	NORTH	260/181	25'3"	25'	32'3"	36'9"	817
12 (CORNER)	NORTH/WEST	260/181	25'3"	25'	27'9"	32'3"	742
13 (CORNER)	SOUTH/WEST	260/181	25'	25'	45'	45'	1112
14	SOUTH	260/181	25'	25'	45'	45'	1125
15	SOUTH	260/181	25'	25'	45'	45'	1125
16	SOUTH	260/181	25'	25'	45'	45'	1125
17	SOUTH	260/181	25'	25'	45'	45'	1125
18 (CORNER)	SOUTH/EAST	260/181	25'	25'	45'	45'	1112
19 (CORNER)	SOUTH/WEST	260/181	28'6"	28'6"	30'	30'	843
20	SOUTH	260/181	26'3"	26'3"	30'	30'	788
21	SOUTH	260/181	26'	27'3"	30'	30'	799
22	NORTH	260/181	25'6"	27'	45'	45'	1181
23	NORTH	260/181	28'	28'	45'	45'	1260
24 (CORNER)	NORTH/WEST	260/181	29'	29'	45'	45'	1292
25 (CORNER)	NORTH/EAST	260/181	25'	25'	45'	45'	1112
26	NORTH	260/181	25'	25'	45'	45'	1125
27	NORTH	260/181	25'	25'	45'	45'	1125
28	NORTH	260/181	25'	25'	45'	45'	1125
29	NORTH	260/181	25'	25'	45'	45'	1125
30(CORNER)	NORTH/WEST	260/181	25'	25'	45'	45'	1112
31(CORNER)	SOUTH/WEST	260/181	25'	25'	45'	45'	1112
32	SOUTH	260/181	25'	25'	45'	45'	1125
33	SOUTH	260/181	25'	25'	45'	45'	1125
34	SOUTH	260/181	25'	25'	45'	45'	1125
35	SOUTH	260/181	25'	25'	45'	45'	1125
36(CORNER)	SOUTH/EAST	260/181	25'	25'	45'	45'	1112
37(CORNER)	SOUTH/WEST	260/181	29'	29'	45'	45'	1292
38	SOUTH	260/181	28'	28'	45'	45'	1260
39	SOUTH	260/181	27'	28'9"	45'	45'	1254
40	NORTH	260/181	27'6"	29'	45'	45'	1271
41	NORTH	260/181	29'6"	29'6"	45'	45'	1328
42 (CORNER)	NORTH/WEST	260/181	29'6"	29'6"	45'	45'	1315
43 (CORNER)	NORTH/EAST	260/181	25'	25'	45'	45'	1112
44	NORTH	260/181	25'	25'	45'	45'	1125
45	NORTH	260/181	25'	25'	45'	45'	1125
46	NORTH	260/181	25'	25'	45'	45'	1125
47	NORTH	260/181	25'	25'	45'	45'	1125
48(CORNER)	NORTH/WEST	260/181	25'	25'	45'	45'	1112
49(CORNER)	SOUTH/WEST	260/181, 260/182	25'	25'	45'	45'	1112
50	SOUTH	260/181, 260/182	25'	25'	45'	45'	1125
51	SOUTH	260/181, 260/182	25'	25'	45'	45'	1125
52	SOUTH	260/181, 260/182	25'	25'	45'	45'	1125
53	SOUTH	260/181, 260/182	25'	25'	45'	45'	1125

54 (CORNER)	SOUTH/EAST	260/181, 260/182	25'	25'	45'	45'	1112
55 (CORNER)	SOUTH/WEST	260/181, 260/182	29'6"	29'6"	45'	45'	1315
56	SOUTH	260/181, 260/182	29'6"	29'6"	45'	45'	1328
57	SOUTH	260/181, 260/182	29'	30'6"	45'	45'	1339
58	NORTH	260/182	30'6"	32'	47'	47'	1469
59	NORTH	260/182	30'	30'	47'	47'	1410
60 (CORNER)	NORTH/WEST	260/182	30'	30'	47'	47'	1397
61 (CORNER)	NORTH/EAST	260/182	25'	25'	47'	47'	1162
62	NORTH	260/182	25'	25'	47'	47'	1175
63	NORTH	260/182	25'	25'	47'	47'	1175
64	NORTH	260/182	25'	25'	47'	47'	1175
65	NORTH	260/182	25'	25'	47'	47'	1175
66(CORNER)	NORTH/WEST	260/182	25'	25'	47'	47'	1162
67(CORNER)	SOUTH/WEST	260/182	25'	25'	47'	47'	1162
68	SOUTH	260/182	25'	25'	47'	47'	1175
69	SOUTH	260/182	25'	25'	47'	47'	1175
70	SOUTH	260/182	25'	25'	47'	47'	1175
71	SOUTH	260/182	25'	25'	47'	47'	1175
72 (CORNER)	SOUTH/EAST	260/182	25'	25'	47'	47'	1162
73 (CORNER)	SOUTH/WEST	260/182	30'	30'	47'	47'	1397
74	SOUTH	260/182	30'	30'	47'	47'	1410
75	SOUTH	260/182	32'	33'6"	47'	47'	1539
76	NORTH	260/182	29'6"	31'	43'3"	43'3"	1308
77	NORTH	260/182	32'	32'	43'3"	43'3"	1384
78 (CORNER)	NORTH/WEST	260/182	33'	33'	43'3"	43'3"	1415
79 (CORNER)	NORTH/EAST	260/182	25'	25'	53'6"	53'6"	1325
80	NORTH	260/182	25'	25'	53'6"	53'6"	1338
81	NORTH	260/182	25'	25'	53'6"	53'6"	1338
82	NORTH	260/182	25'	25'	53'6"	53'6"	1338
83	NORTH	260/182	25'	25'	53'6"	53'6"	1338
84 (CORNER)	NORTH/WEST	260/182	25'	25'	53'6"	53'6"	1325
85	WEST	260/182	50'	50'	26'3"	26'3"	1313
86	WEST	260/182	50'	50'	24'9"	25'	1244
87	EAST	260/182	44'	44'3"	25'	25'	1092
88	EAST	260/182	43'9"	44'	26'6"	26'3"	1157
89 (CORNER)	NORTH/EAST	260/182	43'6"	43'9"	32'9"	32'9"	1413
90 (CORNER)	SOUTH/EAST	260/182	43'3"	43'6"	18'	18'	769
91	EAST	260/182	43'3"	43'3"	18'	18'	779
92	EAST	260/182	43'	43'3"	18'	18'6"	787
93	EAST	260/182	42'9"	43'	19'9"	19'9"	836
94 (CORNER)	NORTH/EAST	260/182	42'9"	42'9"	19'6"	19'9"	827
95 (CORNER)	SOUTH/EAST	260/181, 260/182	42'6"	42'6"	17'	17'	711
96	EAST	260/181, 260/182	42'6"	42'6"	18'	18'	765
97	EAST	260/181	43'	42'6"	18'	18'	767
98	EAST	260/181	43'6"	43'	18'	18'	779
99	EAST	260/181	44'3"	43'6"	18'	18'	790
100	EAST	260/181	44'9"	44'3"	18'	18'	801
101	EAST	260/181	45'3"	44'9"	18'	18'	810
102	EAST	260/181	45'9"	45'3"	19'9"	19'6"	887
103	EAST	260/181	46'6"	45'9"	19'9"	19'6"	899
104	EAST	260/181	47'	46'3"	19'6"	19'6"	909
105 (CORNER)	NORTH/ EAST	260/181	47'6"	47'	19'9"	19'6"	915
106 (CORNER)	SOUTH/EAST	260/181	46'	46'3"	18'	18'	818
107	EAST	260/181	39'6"	46'3"	18'	18'	772
108	EAST	260/181	33'3"	39'9"	19'	18'	673
109	EAST	260/181	22'6"	33'3"	14'	13'	376

PROPOSED STREET VIEW



EXPANDABLE VILLAS



Option 3 _4 bhk - 1585



Option 1 _ 2 bhk - 961



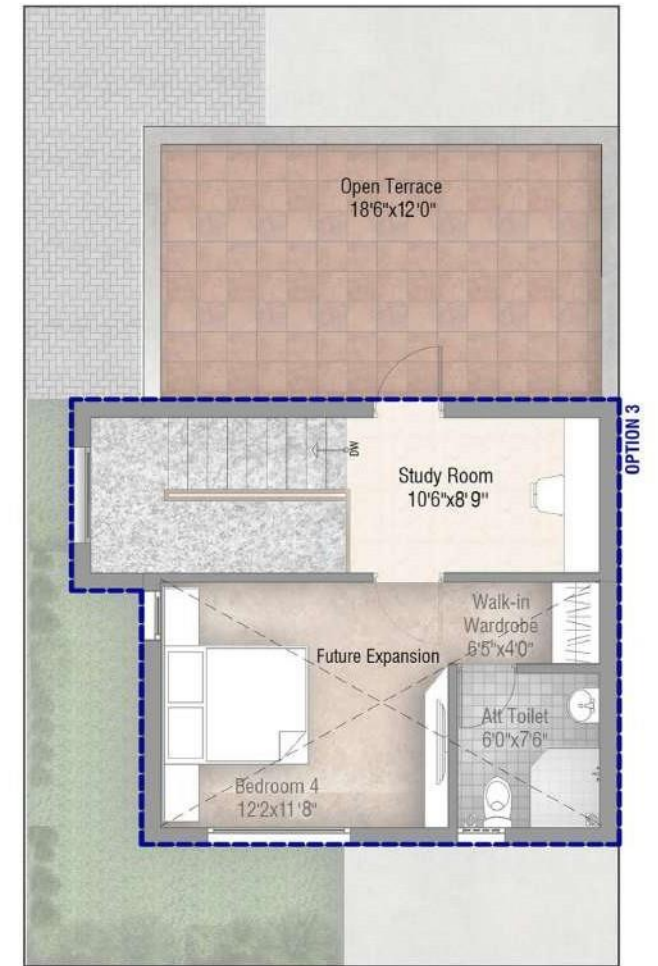
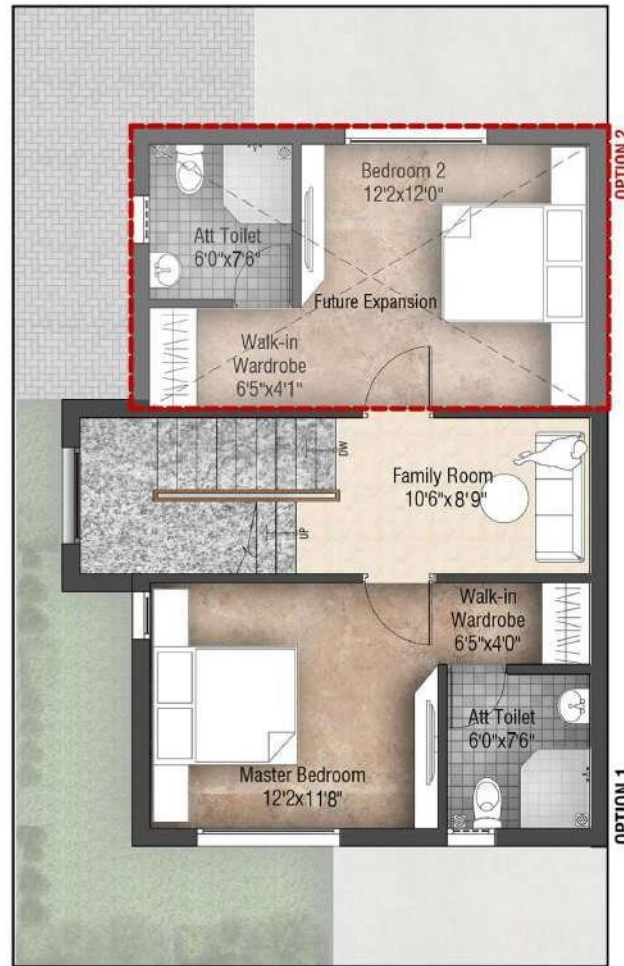
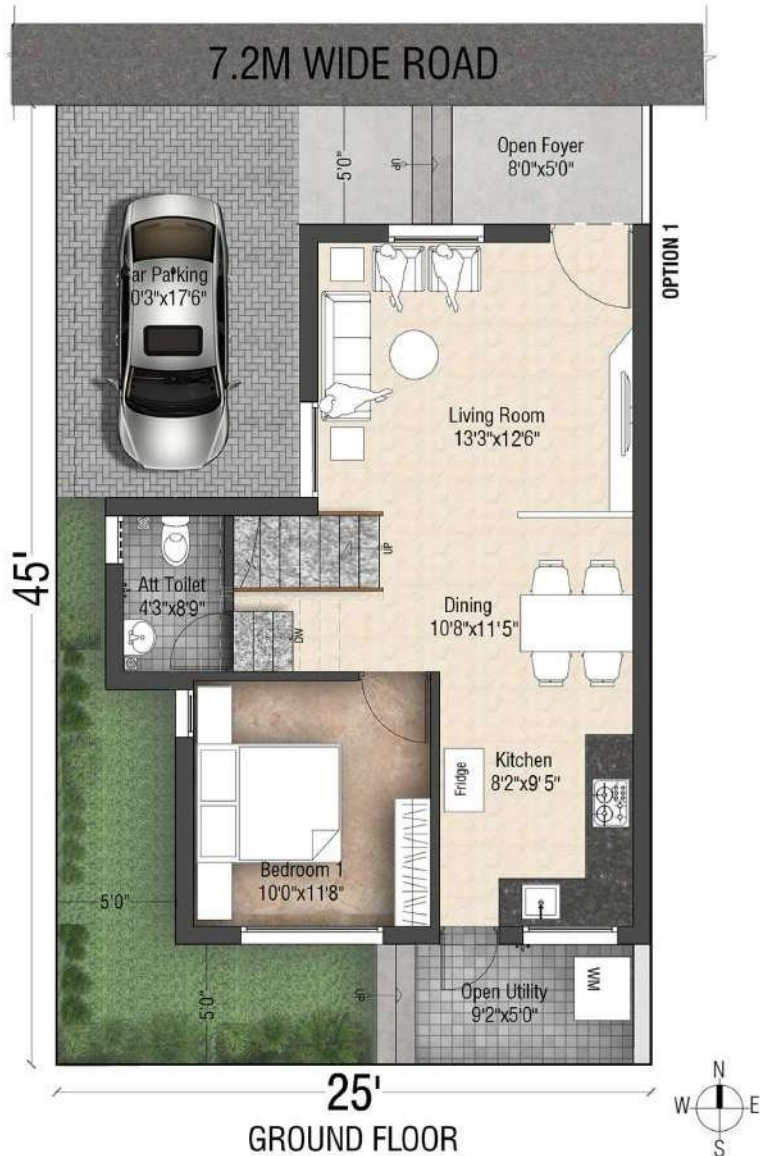
Option 2 _ 3 bhk - 1189



INCREMENTAL HOUSING

PLOT A - 25'0" X 45'0"

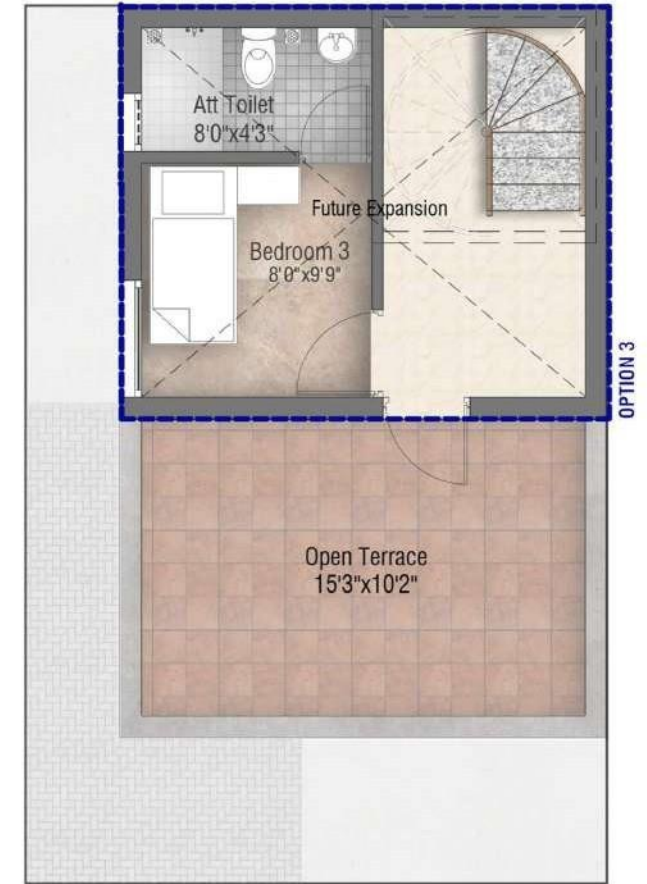
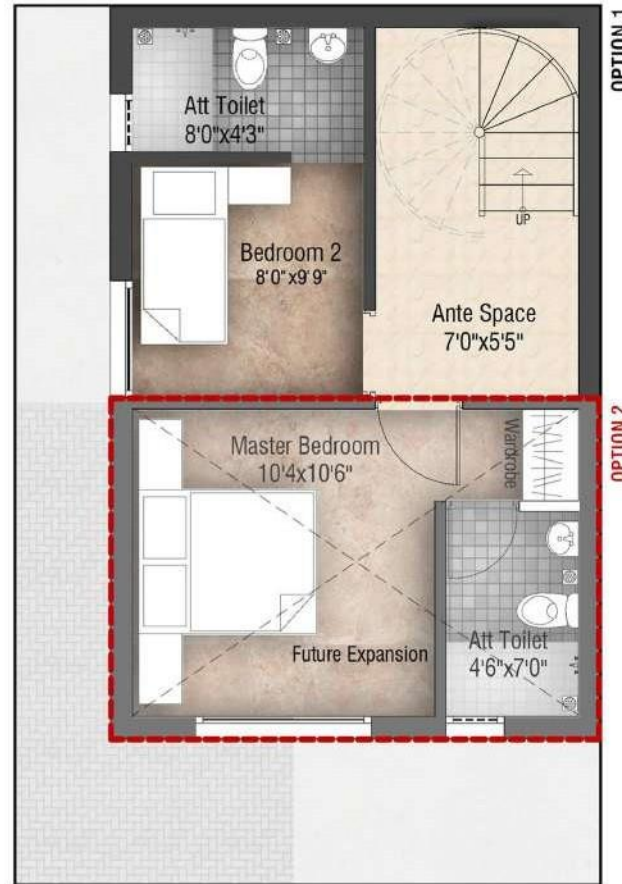
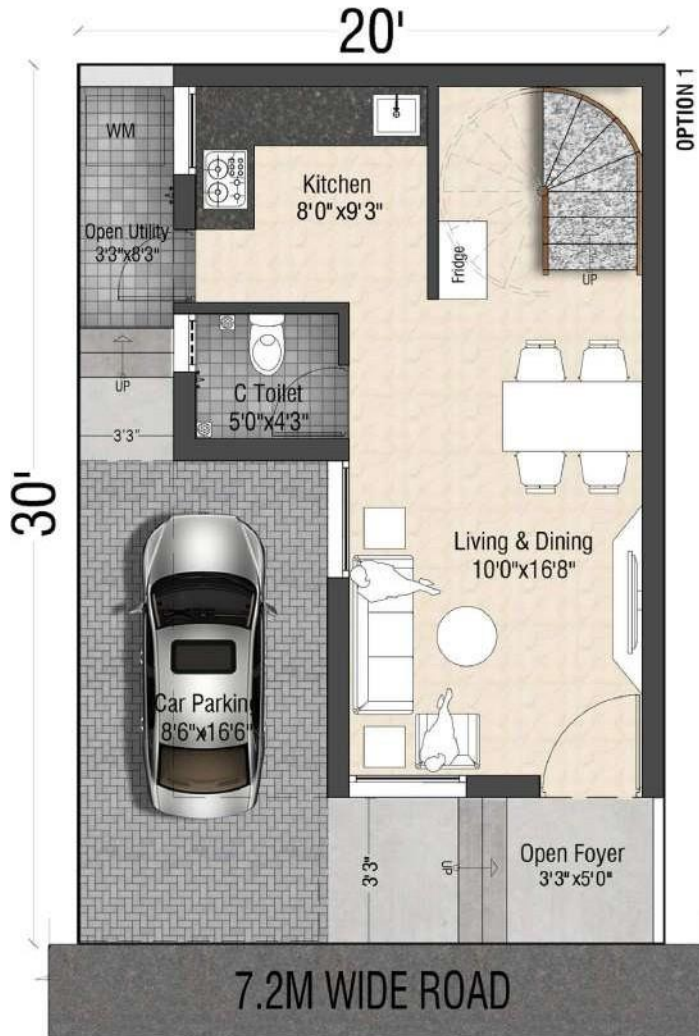
TYPE	GROUND FLOOR	FIRST FLOOR	SECOND FLOOR	TOTAL BUILT-UP AREA
Option 1 2 Bhk	565 Sqft	396 Sqft	-	961 Sqft
Option 2 3 Bhk	565 Sqft	396 Sqft + 228 Sqft (Future Expansion)	-	1189 Sqft
Option 3 4 BHK	565 Sqft	624 Sqft	396 Sqft	1585 Sqft



INCREMENTAL HOUSING

PLOT B - 20'0"X 30'0" EWS HOUSING PLOTS

TYPE	GROUND FLOOR	FIRST FLOOR	SECOND FLOOR	TOTAL BUILT-UP AREA
Option 1	359 Sqft	237 Sqft	-	596 Sqft
Option 2	359 Sqft	237 Sqft + 182 Sqft (Future Expansion)	-	778 Sqft
Option 3	359 Sqft	419 Sqft	237 Sqft	1015 Sqft

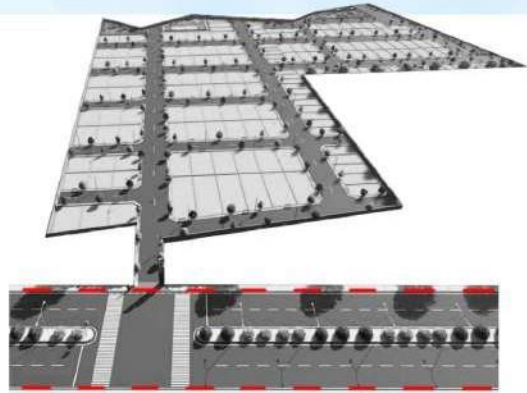


OSR GARDEN

ROAD NETWORK

The Green field Enclave has

The central or main driveway is of 10mtrs (33 ft) wide, the internal community driveways are of 7.2mtrs (23 ft) wide. The wide driveways are Well laid Black top roads. Wide pedestrian walkways with green pockets and street lights



ROAD NETWORK

ACCESS



ENTRY GATE



COMPOUNDED PROPERTY



① CHILDREN'S PLAY AREA



ROAD DEVELOPMENT VIEW



② PLAY COURT

OSR

The heart of the community is in its common spaces. The **Green field Enclave** master plan is embedded with amenities that bring its people together to enjoy a true sense of community. The OSR (Open space reservation) has

Play court : A multi purpose court to bring friends and family together- 'play and have fun'.

Kids play area & Outdoor Fitness :Outdoor fitness bar equipments, swings, slides and more amidst a garden for kids.

Open Gym : Open gym having the fitness equipment for workout

Pedestrian Walkways : OSR with a walking track and well positioned resting spots for the young at heart

Senior Citizen Space : The space with sitting elements surrounded with flowers given for the socialising purpose to the community.

Amphitheatre : Amphitheatre where neighbours can meet up and chit-chat during balmy evenings



③ SENIOR CITIZEN SPACE



OSR TOP VIEW



④ OPEN GYM

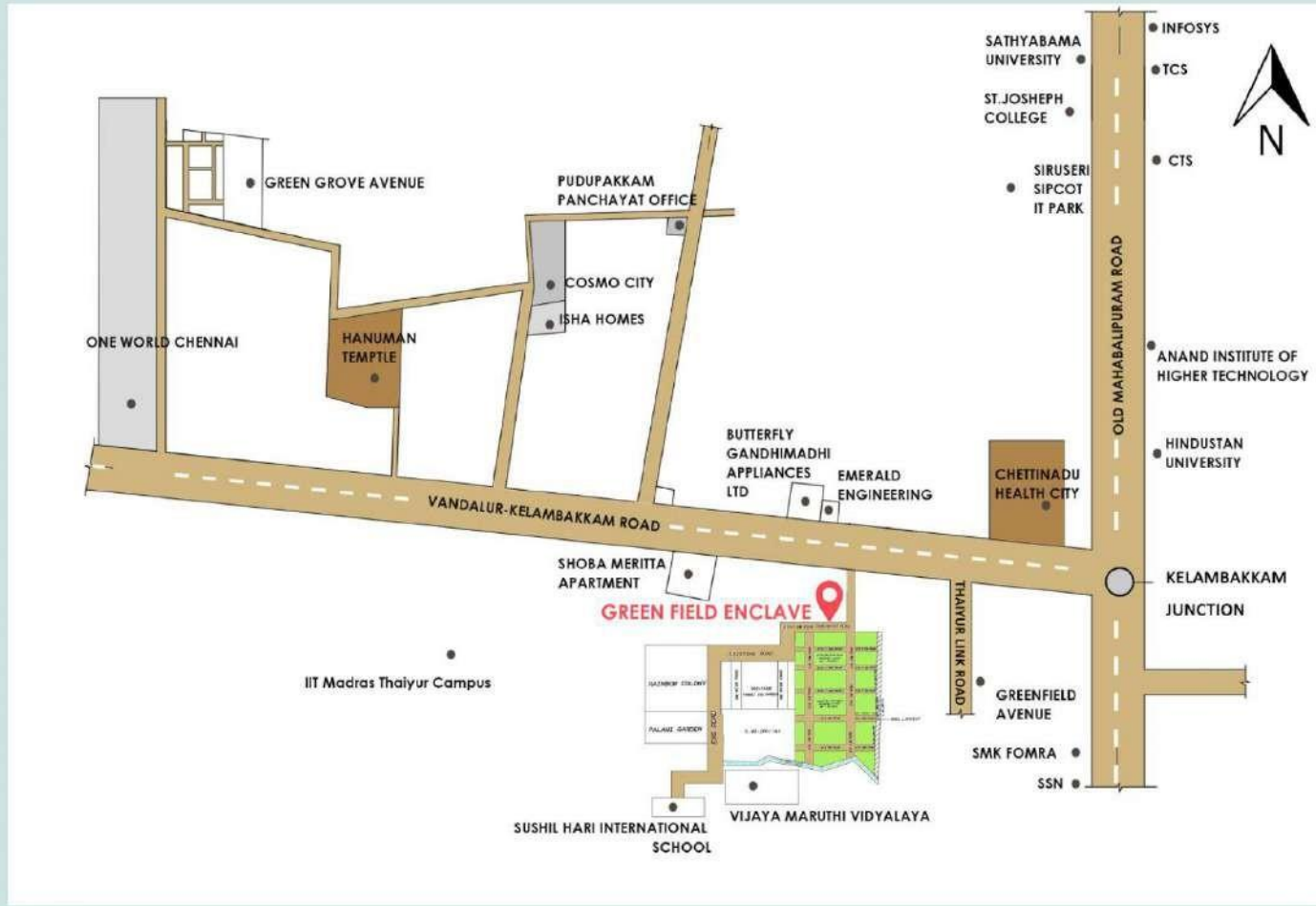
www.plotsinmr.com

FOR SALES CONTACT : 8754476333

Greenfield Enclave
kelambakkam

PLACES NEAR BY

- SMK FOMRA INSITUTE OF TECHNOLOGY
- SSN COLLEGE OF ENGINEERING
- IIITD&M
- CHETTINAD HEALTH CITY
- CRESCENT ENGINEERING COLLEGE
- MAHINDRA WORLD CITY
- TAGORE ENGINEERING COLLEGE
- VANDALUR ZOO
- VIT UNIVERSITY
- HINDUSTAN UNIVERSITY
- ANAND INSTITUTE OF HIGHER TECHNOLOGY
- PSBB SCHOOL
- POLARIS SOFTWARE
- SIRUSERI SIPCOT IT PARK
- TS NARYANASWAMI COLLEGE
- CTS
- HCL
- HOTEL ASIANA
- INFOSYS
- ST.JOSEPHS COLLEGE
- JEPPIAR COLLEGE
- SATHYABAMA UNIVERSITY
- PSBB MILLENNIUM SCHOOL
- BVM GLOBAL SCHOOL
- CHETTINAD SARVALOKAA EDUCATION
- HIRANANDANI UPSCALE SCHOOL
- GATEWAY INTERNATIONAL SCHOOL
- VELAMMAL VIDHYASHRAM
- SUSHIL HARI INTERNATIONAL SCHOOL
- MARINA MALL
- VIVIRA MALL
- VIJAYA MARUTHI VIDYALAYA
- BUTTERFLY GANDHIMADHI APPLIANCES LTD



DESIGNED BY;
ARCHITECTURE PLUS VALUE



Website : www.aplusv.in

ANAND & VENKATESH
GIVING LIFE TO CONCRETE IDEAS

DEVELOPER'S INFO :
Address :
Sampath Building, New No. 52/2,
Bazullah Road, T. Nagar,
Chennai - 600017,
Landline : 044-28342646 / 28342656
Email: anandvenkatesh98@yahoo.in
Web Site: <http://anandvenkatesh.com/>

Copy-right note : This information is the intellectual property of ARCHITECTURE PLUS VALUE. These drawings may not be used, Duplicated, modified or changed in any manner without the written consent of ARCHITECTURE PLUS VALUE. The user and its agent will be liable for any unauthorized use, duplication, modification or change.